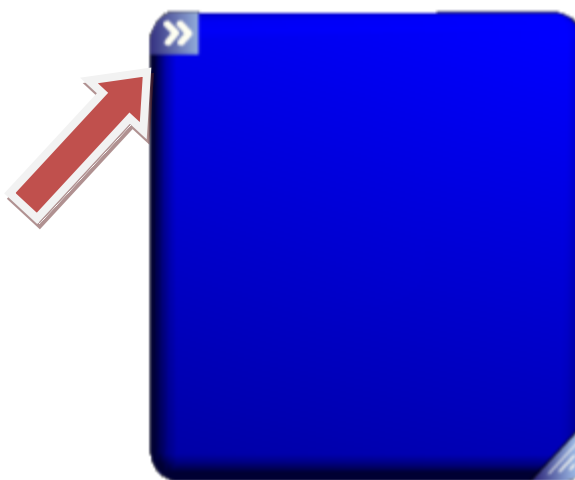
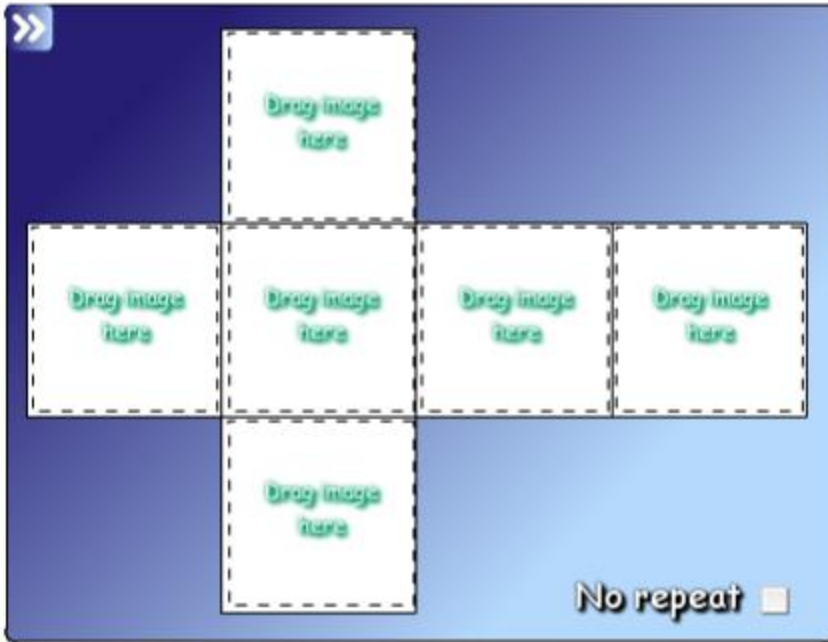




In SMART™ Notebook, search the Gallery for “dice.” Scroll down until you find “Dice – image.” Click on the drop down arrow and insert the item into your notebook.

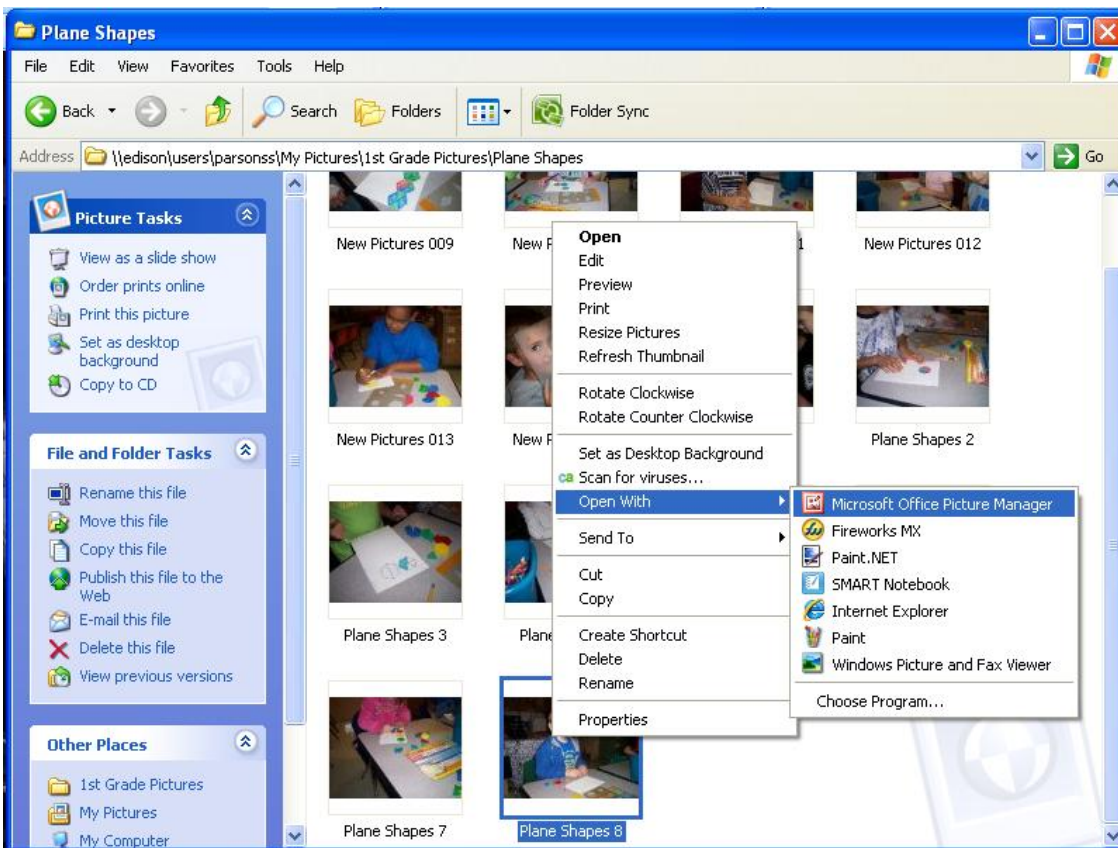


Click on the arrows to open the dice.



This is what the dice will look like when it is opened.

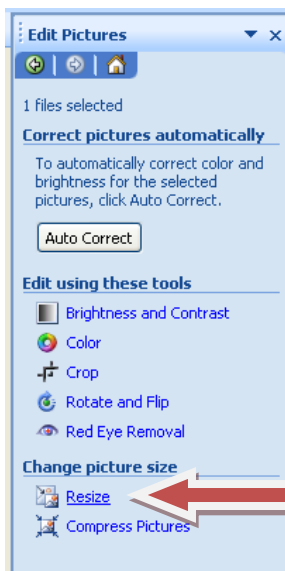
Before inserting your pictures, make sure they are the right size.



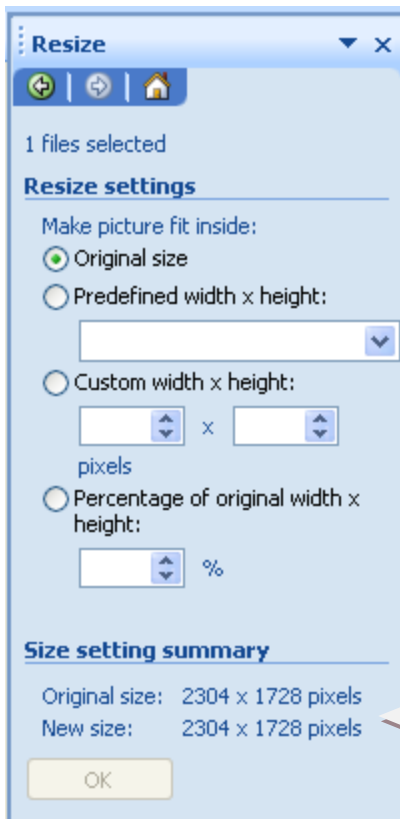
To make sure your pictures are the correct size to put into the dice open them with Microsoft Office Picture Manager. Find the picture you want in My Pictures, right click on the picture and select open with Microsoft Office Picture Manager.



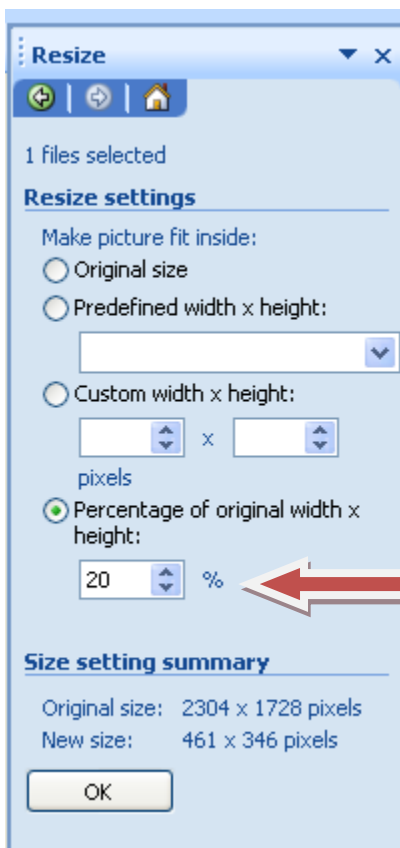
When you open your picture with Microsoft Office Picture Manager this is the screen that will show up. Double Click on the picture to see the drop down option on the right side. Click on the drop down arrow to get to “Edit Pictures.”



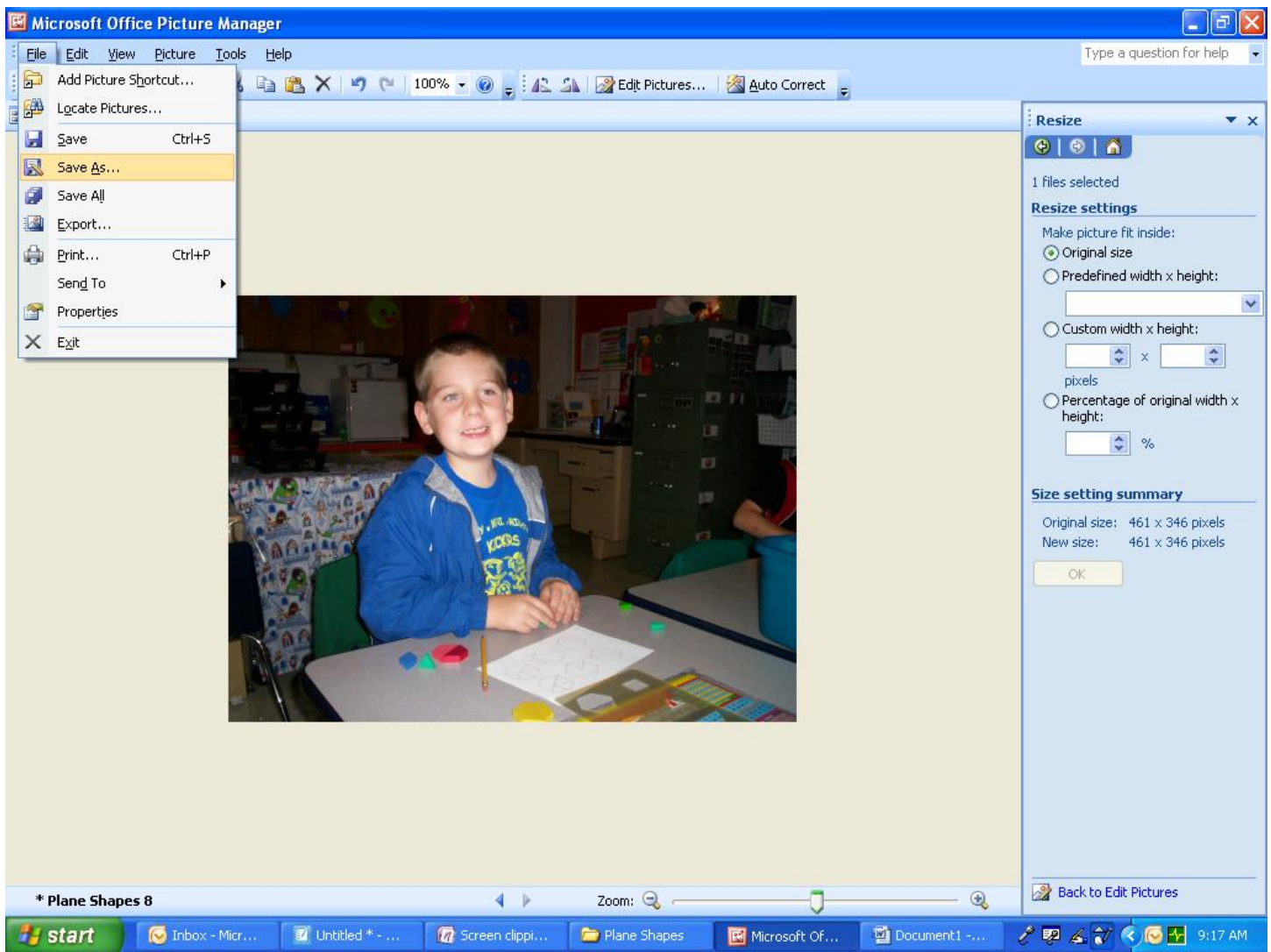
Once you are in the “Edit Pictures” option click on resize.



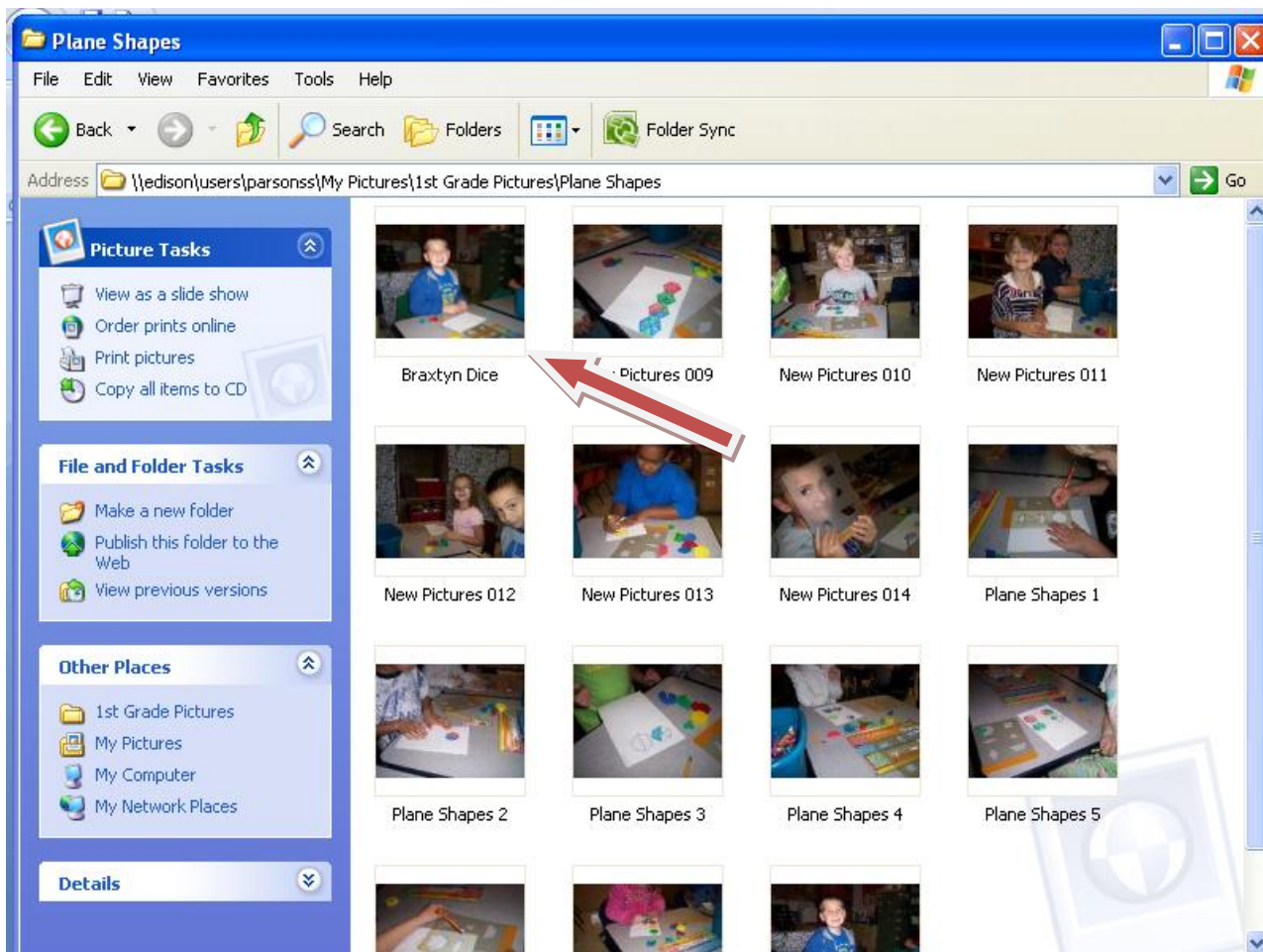
You will notice that the pixels are very large!



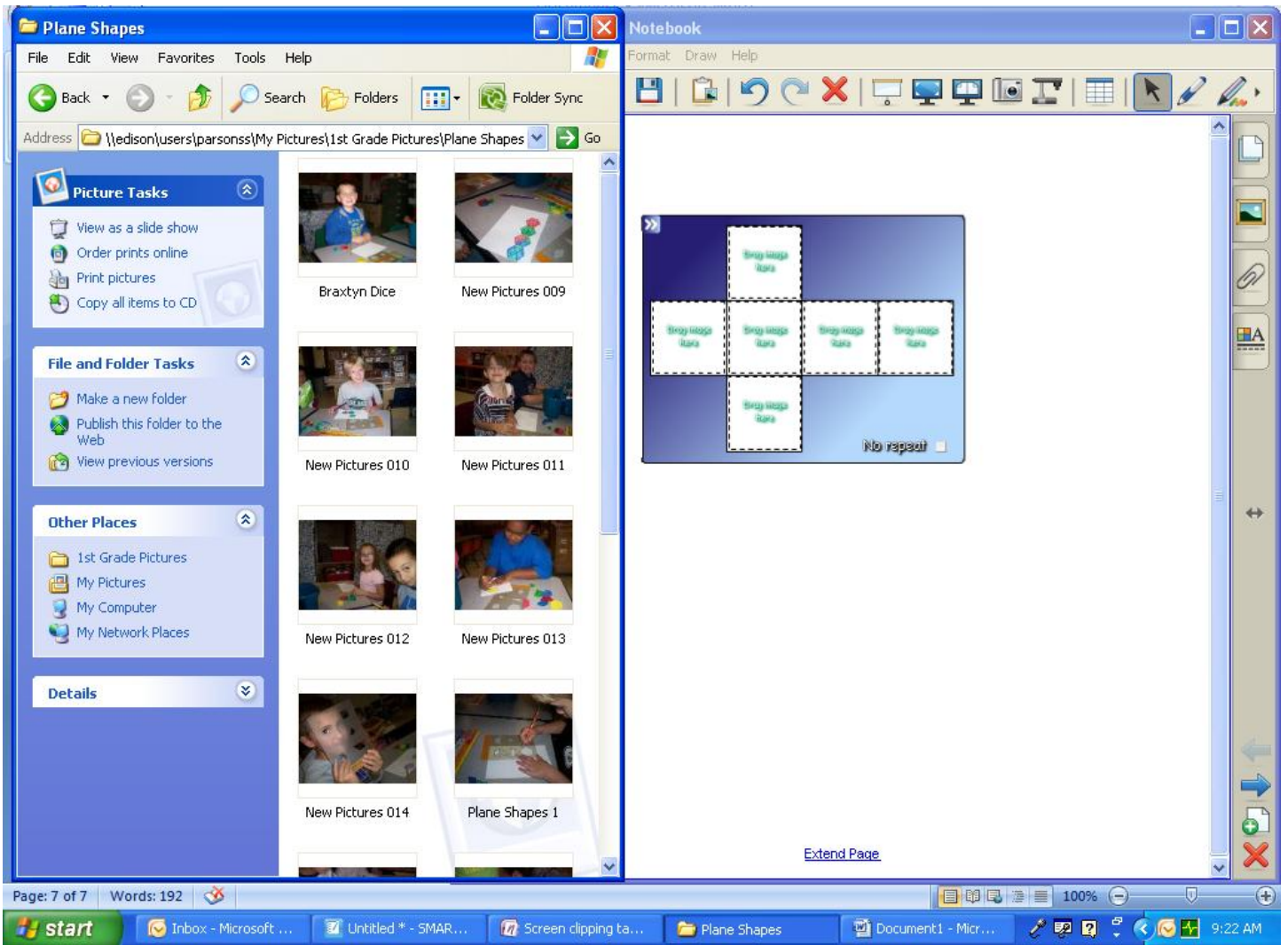
Type in 20% in the percentage box. Then click "OK." You will then notice that the pixels went down drastically.



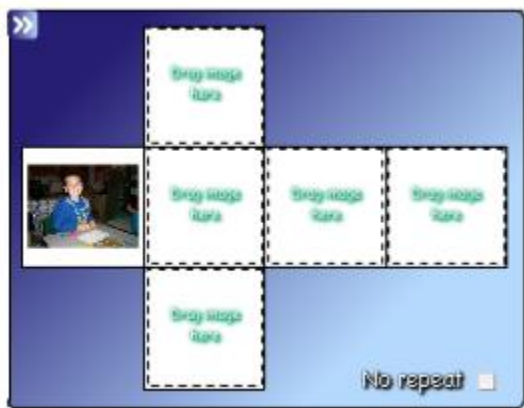
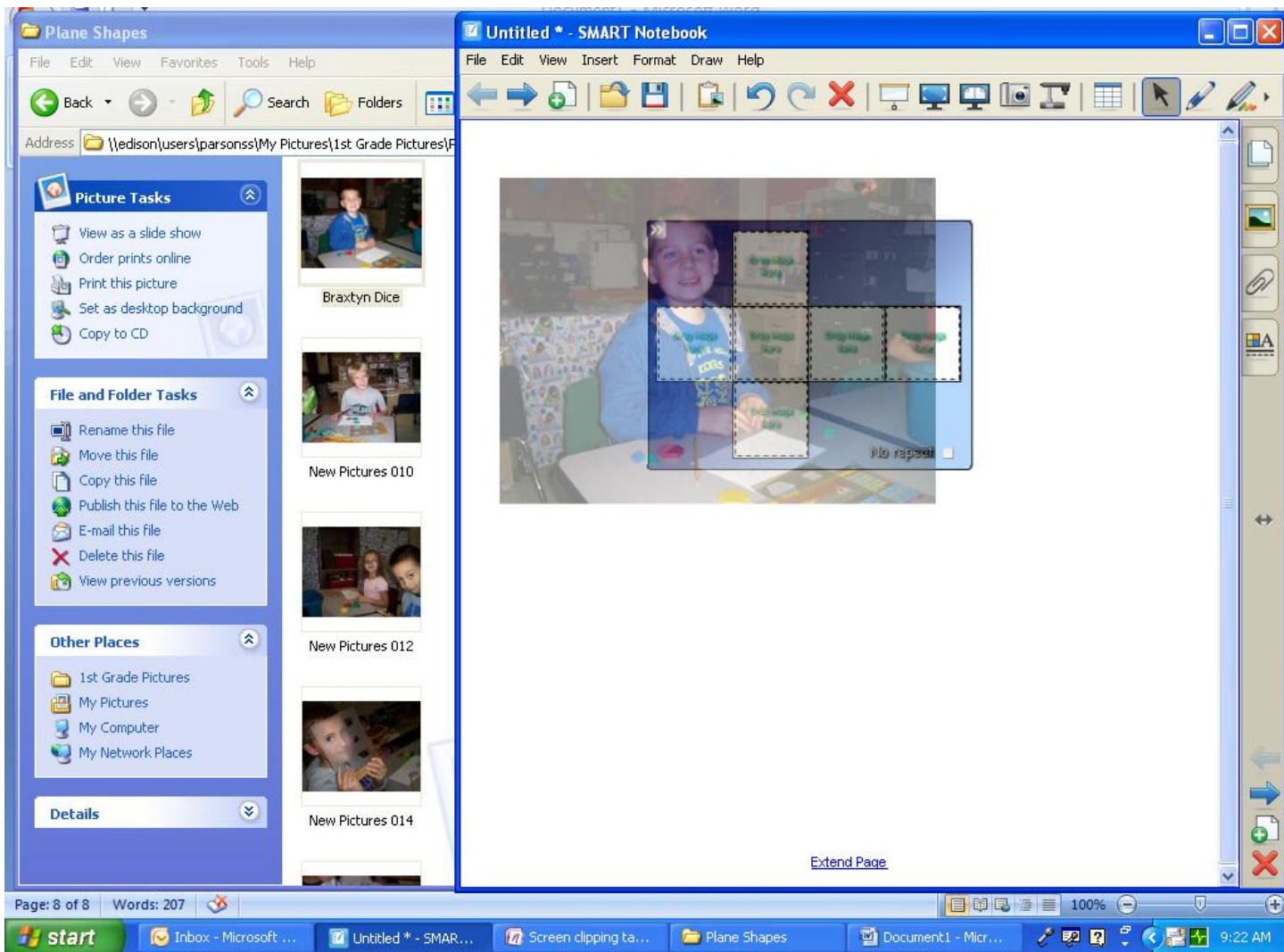
You are now going to want to save this picture and remember where you have saved it!



Then you are going to open the location where you saved your new picture. Make sure that your window is minimized and not taking up the whole screen. Go back to your SMART™ notebook where you have the dice waiting for pictures. Keep that window minimized as well.



Then you are going to click on your picture and drag it onto the dice.



Your picture is now on your dice!

Repeat until you have all sides of the dice filled.